



MANITOBA
FIRST NATIONS
SCHOOL SYSTEM

TEACH FOR **FIRST NATIONS**

Kisemattawa Kiskinwahamkew
Kamik School



Established by

Manitoba
First Nations Education
Resource Centre Inc.





Manitoba First Nations Education Resource Centre Inc. is guided by the following vision and mission statements:

VISION

Support First Nations to develop and implement a comprehensive holistic educational system inclusive of First Nations languages, world views, values, beliefs, and traditions with exemplary academic standards, under First Nation jurisdiction.

MISSION

To help First Nations improve education for all learners to achieve: *mino-pimatisiwin*.

Cree, Ojibwe, Ojibwe-Cree

To help First Nations improve education for all learners to achieve: *honso aynai*.

Dene

To help First Nations improve education for all learners to achieve: *tokadakiya wichoni washte*.

Dakota

WELCOME



On behalf of the Manitoba First Nations Education Resource Centre (MFNERC) Board of Directors, I am pleased to present you with this Kisemattawa Kiskinwahamakew Kamik school information package. I extend my appreciation to everyone involved in gathering and providing information to make this project possible.

Teaching at Kisemattawa Kiskinwahamakew Kamik school will provide you with a unique and valuable career, as well as many new life opportunities. We are excited to work with you as you begin a new journey in your teaching career.

Ekosani,
Chief Clarence Easter
Chemawawin Cree Nation
Chairperson | Board of Directors



On behalf of the MFNERC, we are excited to share this information package with teachers who are interested in joining us to work with First Nations students in Manitoba.

This information package aims to connect motivated and knowledgeable teachers to our First Nation schools. This particular package highlights the many benefits of working with the community of Shamattawa First Nation and the opportunities available at Kisemattawa Kiskinwahamakew Kamik school.

We hope to hear from you soon, and look forward to answering any questions you have about the exciting career opportunities available.

Ekosani,
Lorne C. Keeper
Nisichawayasihk Cree Nation
**Executive Director | Manitoba First Nations
Education Resource Centre**



Surrounding Land

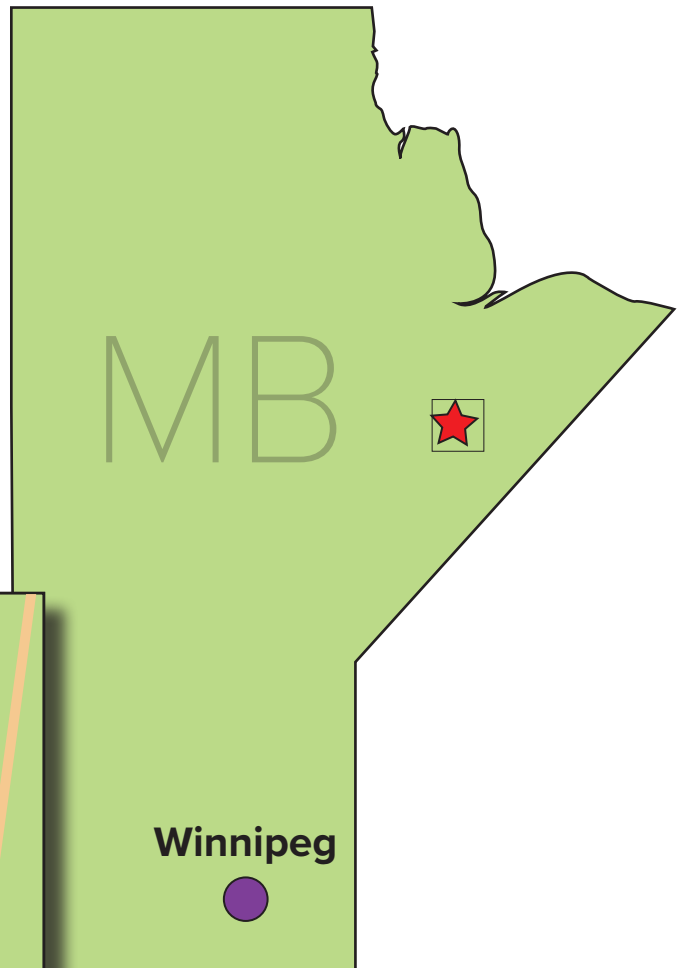
Where is Shamattawa First Nation?

Located along the north shore, where God's River and Echoing River merge, Shamattawa First Nation is a small, remote, fly in community with beautiful scenery and an opportunity to experience nature at its finest.

Perimeter Airlines offers daily flights from Winnipeg, Monday to Friday. Flights are approximately 2 hours long.

Service Centres

Shamattawa First Nation is located 1,277 km north of Winnipeg and 365 km east of Thompson. Gillam is accessible via winter road access, taking approximately 5-6 h.





Kisemattawa Kiskinwahamakew Kamik School

Demographics

Student: 400+

Staff: 30+

Classroom Teachers: 22

Grades

Nursery – Grade 12

School time

9:00 a.m. – 3:30 p.m.

Community Population

On reserve – 1,019

Language

Cree

Council

Keewatin Tribal Council

Treaty

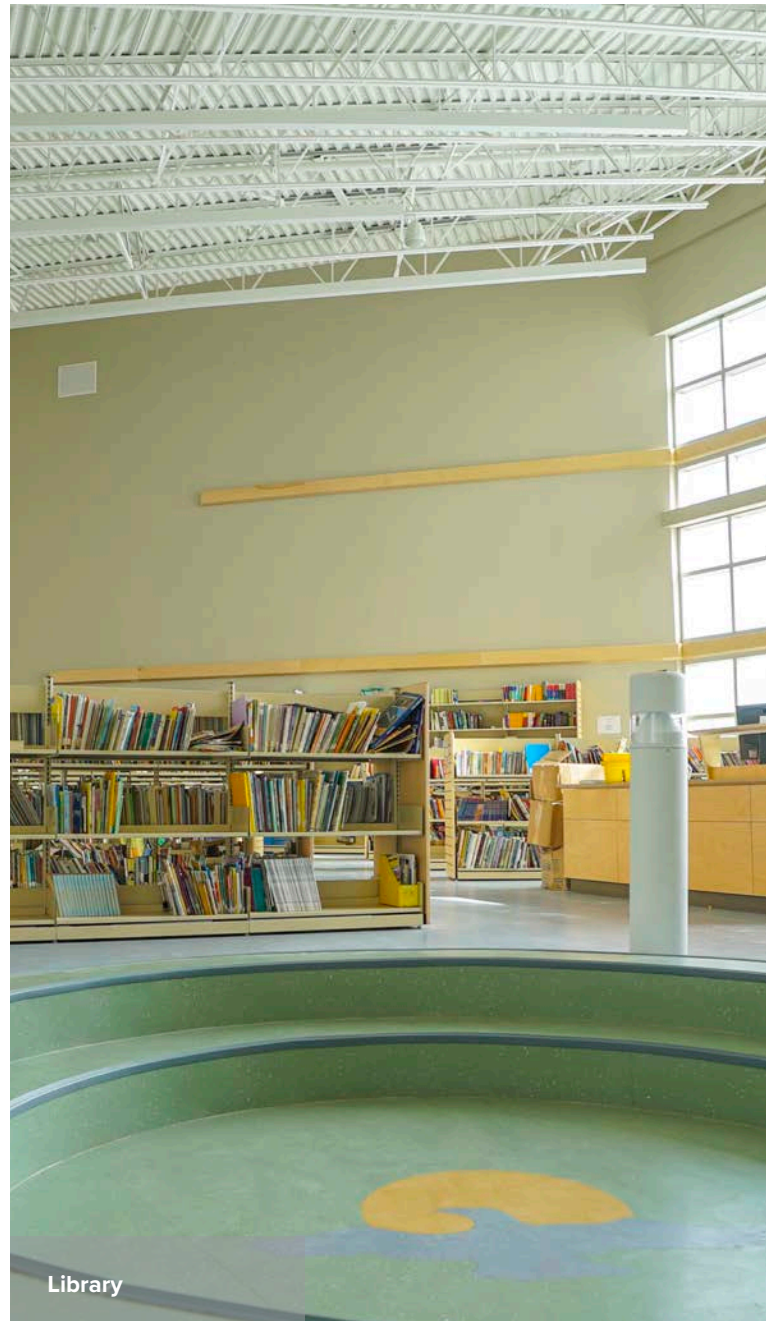
Treaty 5

Temperature Range

Average Summer: 21 °C

Average Winter: -25 °C (windchill can make it feel like -40 °C)

Having appropriate outdoor winter clothing is necessary.





School Specialty Areas



Library

Classes offered

In the near future, land-based education may be introduced into the curriculum. The richness of Shamattawa's land will provide an inspiring and practical setting to teach students everything they need to know about surviving off the land. Teachers are encouraged to develop extracurricular activities.

Events

Shamattawa hosts an annual event called Treaty Days, which takes place in the later part of June. Multiple activities are made available for people of all ages to enjoy.

Competitions

At the end of the school year, the school hosts a sports day. Students are invited to participate in a variety of sporting events to test and demonstrate their athletic abilities.



Facilities

Student facilities

Students have access to a library, cafeteria, computer lab, gymnasium, workout room, and science lab.

Teacher facilities

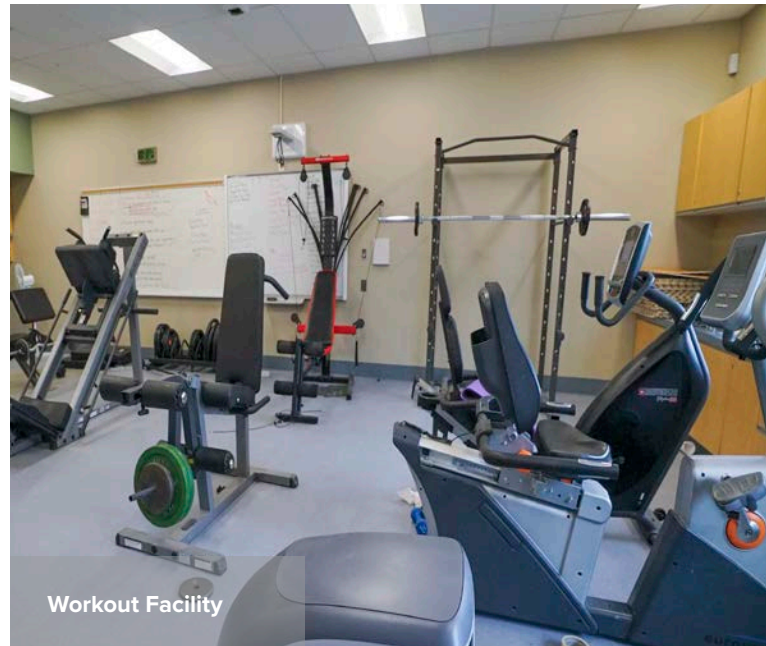
Staff have access to a lounge and all student facilities. The school also offers equipment rentals such as ATVs, kayaks, and boats.

Renovations/upgrades

The school opened its doors in early 2016, there are no immediate plans for renovations or upgrades to the facilities.

Wi-Fi/cellular service

The school is equipped with Wi-Fi for staff and students. There is no cellular service in the school.



Workout Facility



Wood Shop



Teacher Responsibilities



Classroom

What is Kisemattawa Kiskinwahamakew Kamik School looking for in a teacher?

Teachers are expected to be leaders and set a good example for students. The community seeks teachers who are invested in the success of First Nations students and who are determined to help develop students to their highest potential.

Average day

Teachers arrive at 8:30 a.m. and can either participate in the school's breakfast program or prep for classes that begin at 9:00 a.m. Lunch starts at 11:30 a.m., and teachers help their students catch the bus on time at lunch hour and the end of the day. Classes resume at 1:00 p.m. and the school day ends at 3:30 p.m. for students. Teachers leave at 4 p.m.

Other responsibilities

Teachers supervise the students during recesses, lunch breaks, and field trips. Teachers are encouraged to participate in community events and integrate themselves into the community.

Teacher comments - Karren McIntosh

"I feel like when I first came here I knew right away I was going to get experience here that I never would have gotten anywhere else. If I had worked in New Brunswick for five years or ten years, I never would have gotten the experience that I did here in just a year and a half.



Teacherages

The teacherages in Shamattawa are furnished and have one to three-bedroom units. Educators are asked to share units with multiple rooms.

Rent

Rent is subsidized \$250 to \$300 per month.

Distance from the school

There are two separate teacherage locations. One is approximately three kilometres from the school, and the other is a five-minute walk from the school.

Pet friendly

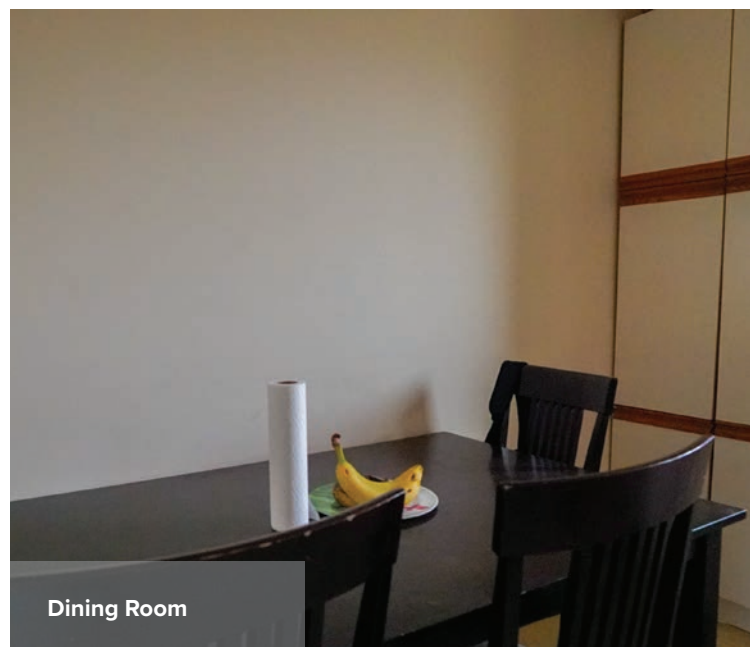
No.

Wi-Fi/cellular service

Wi-Fi is good and provided through Xplornet and Broadband BNC. There is no cellular service in the community.



Living Room



Dining Room



Community Life



Highlights

Shamattawa is a nature lover's dream. Major highlights of the community are the natural beauty, wildlife, and seclusion. The school offers equipment rentals to staff, which allows them to explore the community's landscape. Hunting, fishing, hiking, and kayaking are just some of the activities that Shamattawa has to offer.

Community life

Shamattawa is a close-knit community. Teachers get together for game nights and meals. Community events include radio bingo and annual Treaty Days.

The school's gymnasium is a popular place of gathering, and it is often booked for events or other activities.

Services

Shamattawa is equipped with a grocery/general store, health centre, and gas station. Residents of Shamattawa have the option to fly-in food and supplies from Winnipeg.



Community Directory

Airport

Phone: 1-204-565-2276

Fax: 1-204-565-2110

Band Office

Phone: 1-204-565-2340

Fax: 1-204-565-2486

Education Authority

Phone: 1-204-565-2320

Fax: 1-204-565-2529

Nursing Station

Phone: 1-204-565-2370

Fax: 1-204-565-2519

RCMP

Phone: 1-204-565-2350

Fax: 1-204-565-2201

School

Phone: 1-204-565-2022

Fax: 1-204-565-2122



MANITOBA
FIRST NATIONS
SCHOOL SYSTEM

100-1200 Portage Avenue
Winnipeg, Manitoba R3G 0T5

Phone: (204) 594-6507 | **Fax:** (204) 775-7457
Toll Free: (866) 319- 4857 | **Thompson Toll Free:** (877) 506-1568

www.mfnss.com

For **employment opportunities** please contact:

Human Resources

Manitoba First Nations Education Resource Centre Inc.
2-1100 Waverley Street, Winnipeg, Manitoba R3T 3X9
Email: hr@mfnerc.com | Fax: 204.942.2490

www.mfnerc.org/employment

For more information visit:

www.teachforfirstnations.com