



MANITOBA
FIRST NATIONS
SCHOOL SYSTEM

TEACH FOR **FIRST NATIONS**

Mahpiya Hdega School



Established by
Manitoba
First Nations Education
Resource Centre Inc.





Manitoba First Nations Education Resource Centre Inc. is guided by the following vision and mission statements:

VISION

Support First Nations to develop and implement a comprehensive holistic educational system inclusive of First Nations languages, world views, values, beliefs, and traditions with exemplary academic standards, under First Nation jurisdiction.

MISSION

To help First Nations improve education for all learners to achieve: *mino-pimatisiwin*.

Cree, Ojibwe, Ojibwe-Cree

To help First Nations improve education for all learners to achieve: *honso aynai*.

Dene

To help First Nations improve education for all learners to achieve: *tokadakiya wichoni washte*.

Dakota

WELCOME



On behalf of the Manitoba First Nations Education Resource Centre (MFNERC) Board of Directors, I am pleased to present you with this Mahpiya Hdega school information package. I extend my appreciation to everyone involved in gathering and providing information to make this project possible.

Teaching at Mahpiya Hdega school will provide you with a unique and valuable career, as well as many new life opportunities. The Manitoba First Nations School System (MFNSS) is excited to work with you as you begin a new journey in your teaching career.

Ekosani,

Chief Clarence Easter
Chemawawin Cree Nation
Chairperson | Board of Directors



On behalf of the MFNERC and the MFNSS, we are excited to share this information package with teachers who are interested in joining us to work with First Nations students in Manitoba.

This information package aims to connect motivated and knowledgeable teachers to our innovative school system. This particular package highlights the many benefits of working with the community of Dakota Plains Wahpeton Nation and the opportunities available at Mahpiya Hdega school.

We hope to hear from you soon, and look forward to answering any questions you have about the exciting career opportunities available.

Ekosani,

Lorne C. Keeper
Nisichawayasihk Cree Nation
**Executive Director | Manitoba First Nations
Education Resource Centre**

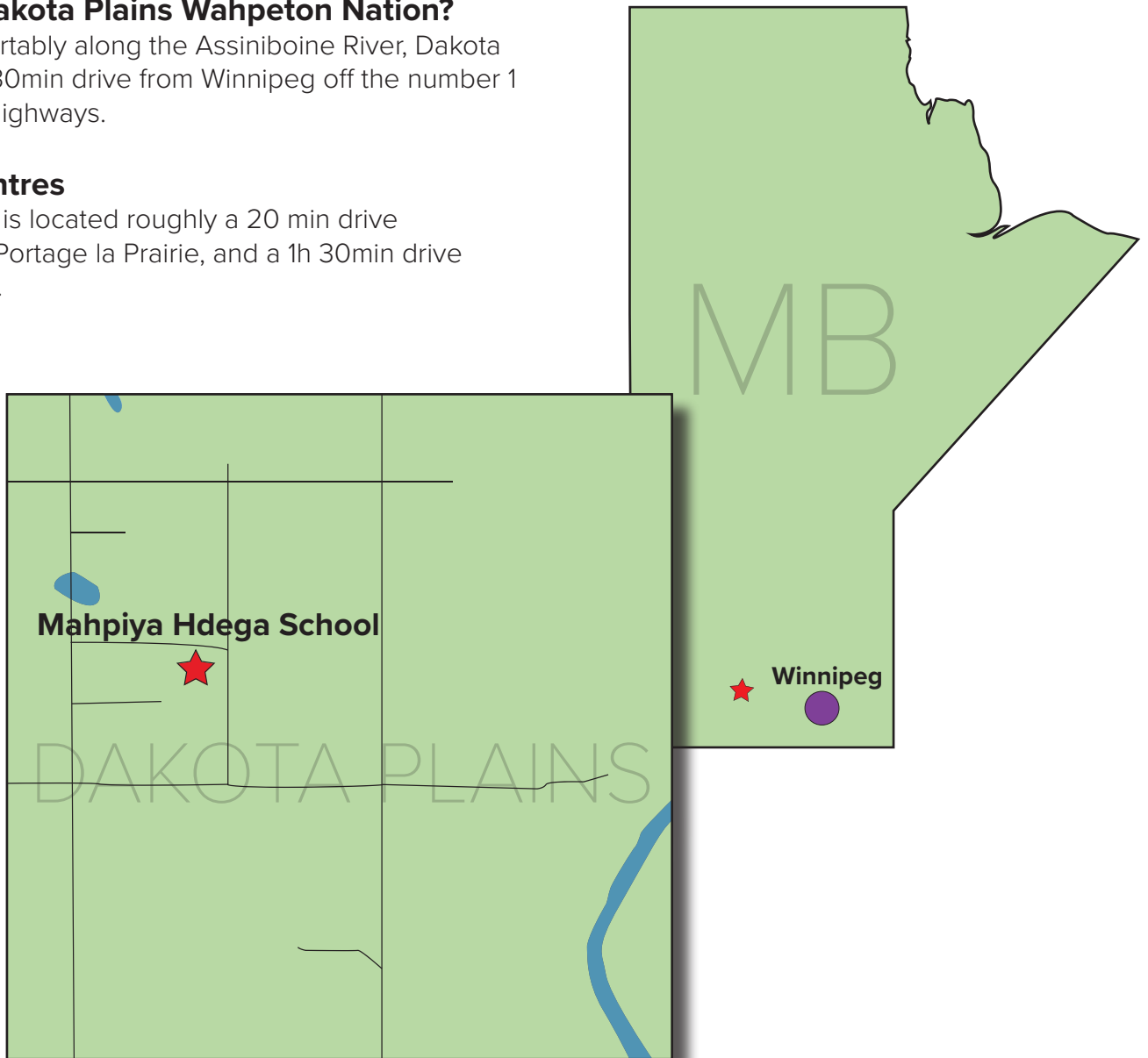
Surrounding Land

Where is Dakota Plains Wahpeton Nation?

Settled comfortably along the Assiniboine River, Dakota Plains is a 1h 30min drive from Winnipeg off the number 1 and the 305 highways.

Service Centres

Dakota Plains is located roughly a 20 min drive southwest of Portage la Prairie, and a 1h 30min drive from Brandon.





Mahpiya Hdega School

Mission statement

We recognize that the role of education is to empower students to develop their individual needs to their fullest potential without loss of identity. We will endeavour to achieve this by providing a safe, secure, positive learning environment; which will develop cultural values, self-esteem, and respect for all.

Demographics

Student: 87

Staff: 22

Teachers: 5

Grades

Kindergarten – Grade 8

School time

9:00 a.m. – 3:30 p.m.

Community Population

Registered – 257

On-reserve – 162

Language

Dakota

Council

No tribal council affiliation

Treaty

No Treaty; on Treaty 1 land

Temperature Range

Average Summer: 20 °C

Average Winter: -18 °C (windchill can feel like -30 °C)



Having appropriate outdoor winter clothing is necessary.



School Specialty Areas



Fire Pit

Classes offered

Mahpiya Hdega School offers various First Nations-related classes like cultural education, land-based education, and Dakota language classes.

Extracurricular activities

Mahpiya Hdega School has numerous extracurricular activities such as a beading club, a pow-wow club, and a drum group. Teachers can start up and run extracurricular activities of their own if approved by administration.

Events

Throughout the year the community hosts a couple of events for the residents. These events include the winter carnival and numerous pow-wows.

Competitions

Mahpiya Hdega School has an exceptional track and field team that competes with other schools in the MFNSS and Winnipeg. The school also sends out other sports teams to compete in the city.

Facilities

Student facilities

Students have access to a gymnasium, computer lab, and library.

Teacher facilities

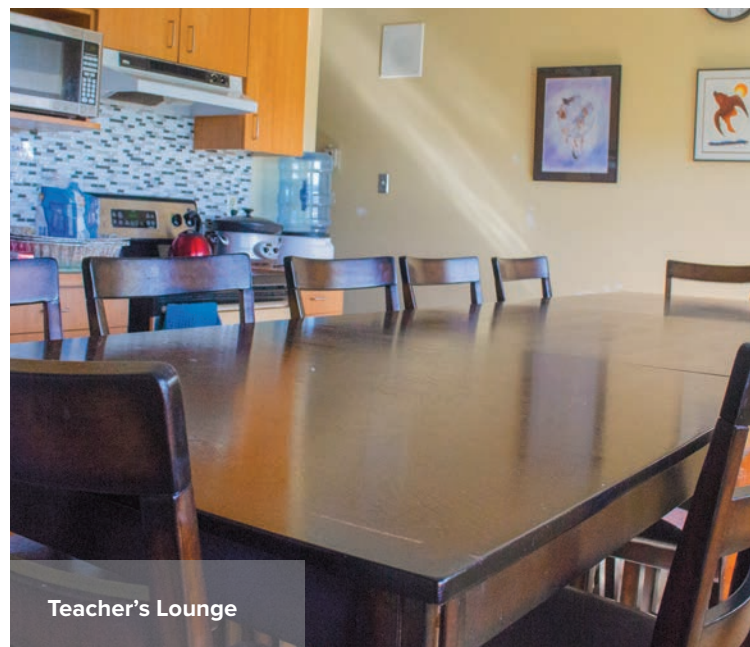
Teachers have access to a teacher's lounge and all student facilities.

Renovations/upgrades

Mahpiya Hdega School was built in 2007 and has no immediate plans for future renovations or upgrades. However, there are plans to build more teacherages.

Wi-Fi/cellular service

Mahpiya Hdega School has access to Wi-Fi. There is spotty cellular service in the school.





Teacher Responsibilities

What is Mahpiya Hdega School looking for in a teacher?

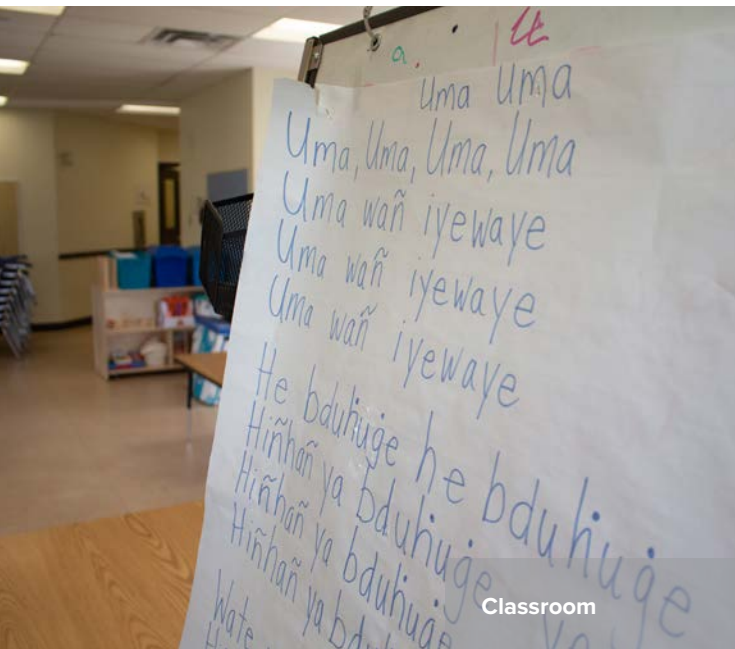
Mahpiya Hdega School seeks to hire well-educated teachers who are devoted to improving First Nations education. Teachers will be expected to demonstrate leadership characteristics that the students can observe and learn from.

An understanding of First Nations culture will benefit any teacher navigating through the school curriculum. Teachers are encouraged to participate in the land-based education program and other cultural activities.

Being a well-rounded role model within the community is another important aspect of the job role. Teachers are encouraged to participate in community events and integrate themselves within the community.

Other responsibilities

Aside from educating the students, teachers are expected to supervise the students during recesses, lunch breaks, and field trips.



Teacher Accommodations

Teacherages

Dakota Plains currently has one teacherage that is undergoing renovations. The facility is a fully furnished, three-bedroom house, so teachers are required to share the space.

Living alternatives can be found in Portage la Prairie, Winnipeg, and Brandon.

Rent

Rent is subsidized at \$400 per month.

Distance from the school

Walking distance.

Pet friendly

Yes.

Wi-Fi/cellular service

Wi-Fi is included. There is spotty cellular service in the community.



Outdoor Rink



Fire Pit



Community Life



Highlights

The school is beautifully designed and kept in pristine condition. Other highlights of the community include the large array of open fields that can be used for hunting and fishing and nearby towns with all necessities.

Community life

Dakota Plains has a vast natural landscape. The residents are very friendly and welcoming to newcomers. Dakota Plains residents can fish and hunt year round. Deer is the predominant species to hunt in the area.

This community will provide you with many opportunities as you begin a new journey in your teaching career.

The amenities are located in Portage la Prairie, 20 minutes away from Dakota Plains. Portage la Prairie has restaurants, provincial parks/museums, and a water park.

Services

Dakota Plains has a health centre and daycare on community grounds. Residents of Dakota Plains have access to many additional services in Portage la Prairie.



Community Directory

Band Office

Phone: 1-204-252-2300

Fax: 1-204-252-2244

Education Authority

Phone: 1-204-252-2300

Fax: 1-204-252-2244

Health Centre

Phone: 1-204-252-2830

Fax: 1-204-252-2111

RCMP

Phone: 1-204-856-5370

Fax: 1-204-856-5389

School

Phone: 1-204-252-2895

Fax: 1-204-252-2188



MANITOBA
FIRST NATIONS
SCHOOL SYSTEM

100-1200 Portage Avenue
Winnipeg, Manitoba R3G 0T5

Phone: (204) 594-6507 | **Fax:** (204) 775-7457
Toll Free: (866) 319- 4857 | **Thompson Toll Free:** (877) 506-1568

www.mfnss.com

For **employment opportunities** please contact:

Human Resources

Manitoba First Nations Education Resource Centre Inc.
2-1100 Waverley Street, Winnipeg, Manitoba R3T 3X9
Email: hr@mfnerc.com | Fax: 204.942.2490

www.mfnerc.org/employment

For more information visit:

www.teachforfirstnations.com